

POSITIONS OF THE OPERATOR'S HAND DURING MECHANICAL REMOVING OF THE DENTAL DEPOSITS

МИНСК, 2021

ДОЦ. ПЕТРУК А. А.

АСС. КРИВОНОЩЕНКО В. В.

КАФЕДРА ОБЩЕЙ
СТОМАТОЛОГИИ БГМУ

PURPOSE

- EXAMINATION OPTIMAL POSITIONS OF THE OPERATOR'S HAND DURING MECHANICAL REMOVING OF THE DENTAL DEPOSITS

1) SCALING AN APPROXIMATE TOOTH SURFACE

- SUPPORT ON THE FOURTH FINGER. THE CUTTING SURFACE OF THE WORKING PART OF THE TOOL IS LOCATED ON THE APPROXIMATE SURFACE OF INCISORS, THE PRESSURE IS TRANSFERRED FROM THE THUMB TO THE MIDDLE FINGER IN THE VESTIBULAR-



2) SCALING AN APPROXIMATE TOOTH SURFACE

- THE PRESSURE IS EXERTED FROM THE THIRD FINGER ON THE SIDE OF THE ORAL CAVITY IN THE VESTIBULAR DIRECTION TO THE THUMB. THE SUPPORT AND MIDDLE FINGERS ARE CLOSE TO EACH OTHER OR IN TIGHT CONTACT. THE TIGHT POSITION OF THE MIDDLE AND SUPPORT FINGERS ALLOWS YOU TO KEEP MOVEMENTS ST



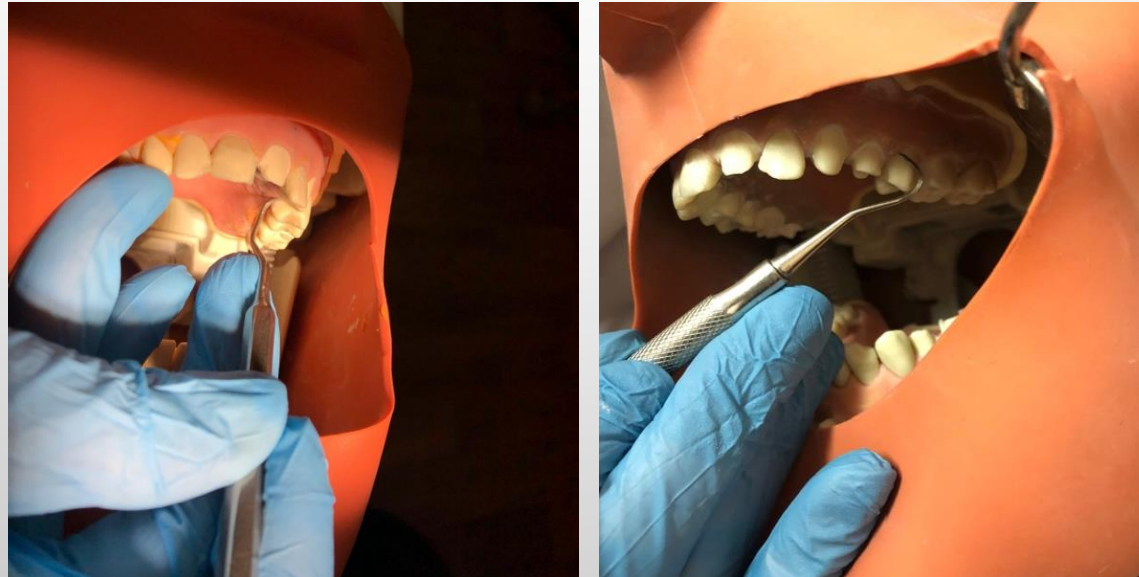
3) THE POSITION OF THE INSTRUMENT TOOL IS PARALLEL TO THE SURFACE OF TOOTH

- THE SUPPORT FINGER SHOULD BE LOCATED NEAR THE WORK AREA. THE POSITION OF THE TOOL IS PARALLEL TO THE TOOTH SURFACE. THE SUPPORT FINGER SHOULD CHANGE AS THE WORKING PART OF THE TOOL MOVES FROM ONE TOOTH TO ANOTHER. THE INSTRUMENT IS SELECTED IN ACCORDANCE WITH THE GROUP OF THE TOOTH



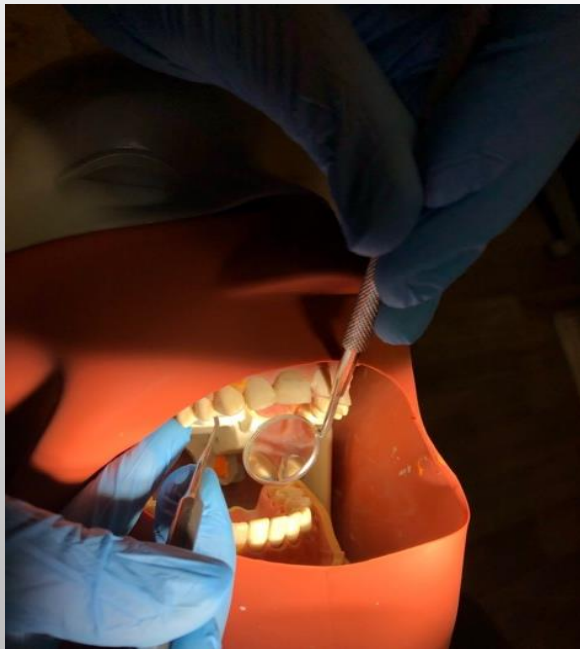
FIXATION OF THE HAND ON THE OPPOSITE SIDE OF THE JAW

- FOR BETTER FIXATION OF THE HAND, THE SUPPORT FINGER CAN BE POSITIONED ON THE OPPOSITE SIDE OF THE JAW AND ON THE OPPOSITE JAW. AT THE SAME TIME, THE TOOL LEVER IS INCREASED, AND THE MOVEMENTS REMAIN PRECISE.



FIXATION OF THE HAND ON THE DISTALLY LOCATED TEETH

- THE FIXATION OF THE HAND ON THE UPPER JAW CAN BE CARRIED OUT ON THE DISTALLY LOCATED TEETH, BUT AS CLOSE AS POSSIBLE TO THE WORKING SURFACE OF THE INSTRUMENT AND THE SURFACE TO BE TREATED.



CONTROL OF THE MOVEMENTS IN DENTAL MIRROR

- THE POSITION OF THE PATIENT'S HEAD CHANGES IN ACCORDANCE WITH THE RULES OF ERGONOMICS, HOWEVER, WITH THE LINGUAL INCLINATION OF THE LOWER CENTRAL INCISORS, VISUAL CONTROL OF MOVEMENTS IS SOMETIMES DIFFICULT. IN THIS CASE, MANIPULATIONS ARE CONTROLLED IN THE DENTAL MIRROR



FIXATION OF THE MOBILE TEETH

- IN THE CASE OF THE TEETH MOBILITY, DURING SCALING, THE TEETH MUST BE HELD WITH FINGERS TO PREVENT ADDITIONAL PERIODONTAL TRAUMA.



CONCLUSION

- STUDIED POSITIONS OF THE OPERATOR'S HAND DURING MECHANICAL REMOVING OF THE DENTAL DEPOSITS
- SELECTED OPTIMAL ERGONOMIC POSITIONS OF THE OPERATOR'S HAND DURING MECHANICAL REMOVING OF THE DENTAL DEPOSITS